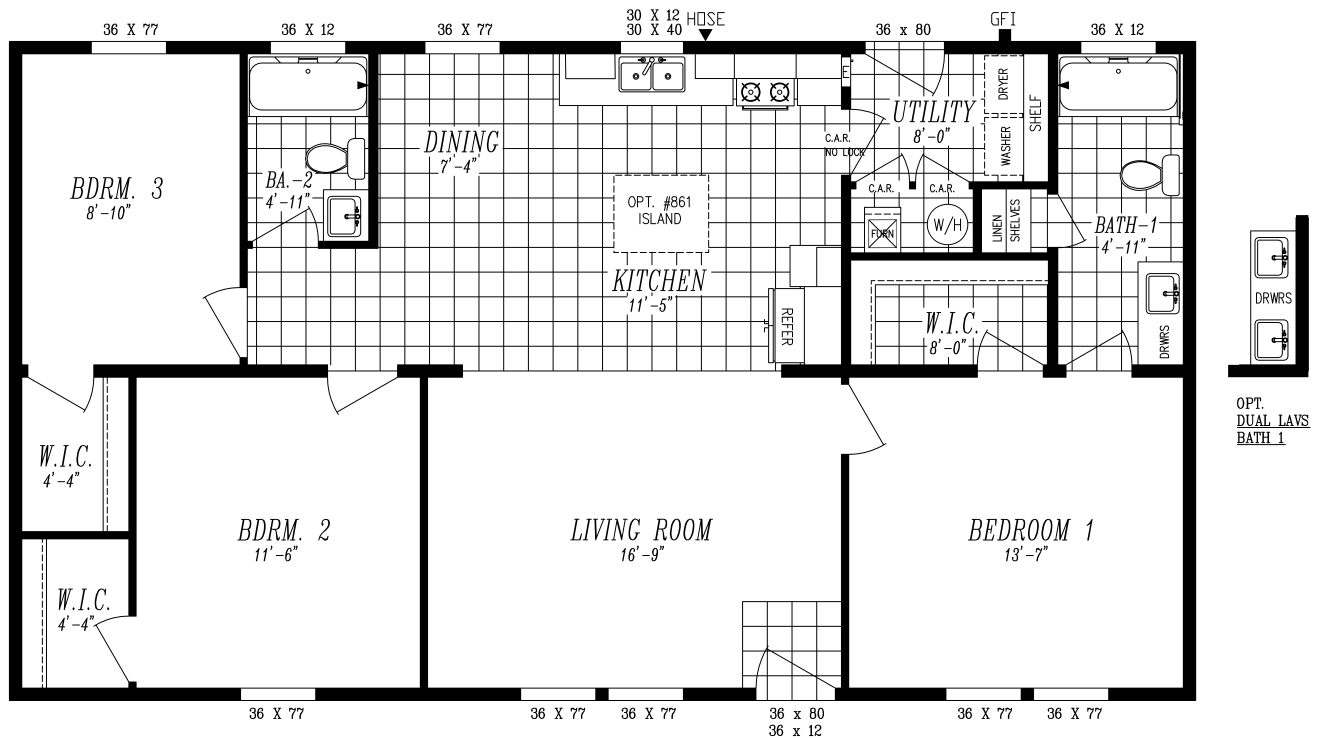


COLUMBIA

RIVER

Clayton
hermiston

MODEL: 2030 | 26'8" x 48' | 1280 SQ. FT. | 3 BED 2 BATH



- ENERGY STAR® Rated Home
- LP® SmartSide® Panel Siding
- Weather Resistant House Wrap Under Siding
- Large Dormer w/ Board and Batton Accent Area
- Oversized Eaves and Overhangs
- Architectural Shingles w/ Limited Lifetime Warranty
- 2" x 6" Exterior Walls
- Sherwin Williams Paint - Interior and Exterior
- Tape and Texture with Square Corners
- Baseboard Molding in Vinyl Flooring Areas
- 9' Tall Flat Ceilings
- Hardwood Cabinets (Featuring 42" Tall Overheads)
- 6" Recessed LED Lighting
- Ceiling Fan Prep in Living Room & Family Room
- Fiberglass Tubs and Showers

- Pfister® Faucets Throughout
- Congoleum LUX Vinyl Flooring
- Shaw® 25 oz. Stain Resistant Carpet
- Kwikset® Door Hardware (Featuring Thumb Latch Front Door)
- 6 Panel Front Door & 9 Lite Rear Door
- ecobee® Smart Thermostat
- Carrier SmartComfort® Electric Furnace

STAINLESS STEEL APPLIANCE PACKAGE

- Side by Side Energy Star Refrigerator with Ice and Water
- Smooth Top, Self-Cleaning Electric Range
- Energy Star Dishwasher
- Above Range Microwave



This home series and floor plans indicated will vary by retailer and state. Your local Home Center can quote you on specific prices and terms of purchase for specific homes. Clayton Home Building Group invests in continuous products and process improvement. All home series, floor plans, specifications, dimension, features, materials, availability, and starting prices shown on this website are artist's renderings or estimates, and are subject to changes without notice. Dimensions are nominal and length and width measurements are from exterior wall to exterior wall.