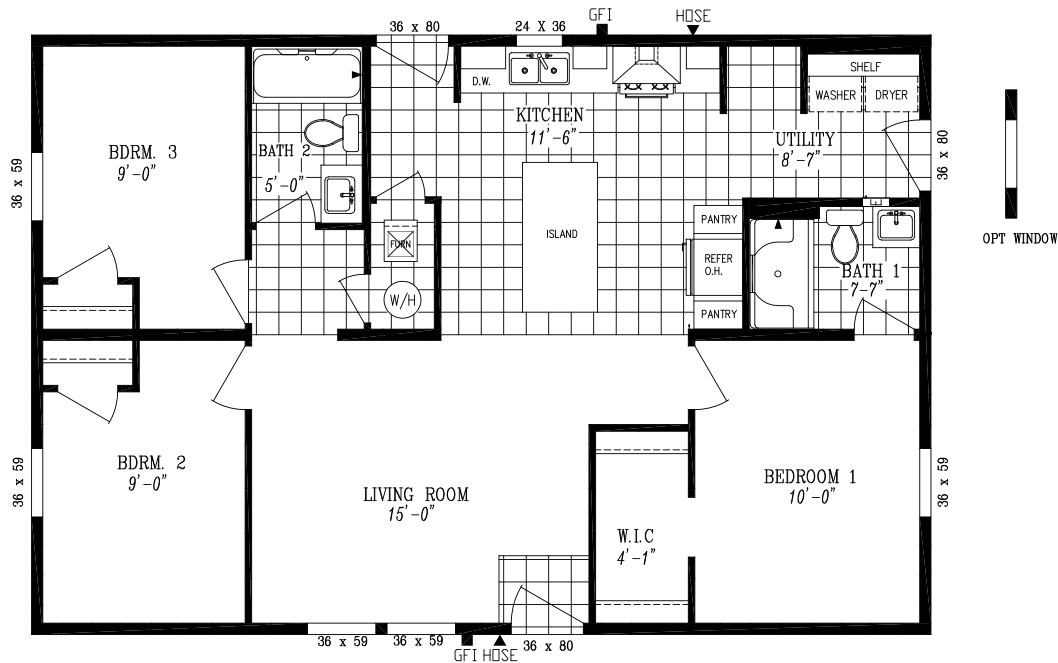


Sweet Dreams

26' 8" x 40' | 1,067 sq. ft. | 3 Bed 2 Bath



- 8' Tall Flat Ceilings
- LP® SmartSide® Panel Siding with 5/50 Year Limited Warranty
- Weather Resistant House Wrap Under Siding
- Sherwin Williams Paint - Interior and Exterior
- Tape and Texture with Square Corners
- 2" x 6" Exterior Walls
- ENERGY STAR® Rated Home
- Hardwood Cabinets (Featuring 42" Tall Overheads)
- 6" Recessed LED Lighting
- Ceiling Fan Prep in Living Room & Bedrooms
- Fiberglass Tubs and Showers

- Stainless Steel Appliances (Featuring 18' Top Freezer)
- Pfister® Faucets Throughout (Featuring Stainless Pull Down in Kitchen)
- 36" Stainless Steel European Range Hood
- Congoleum LUX Vinyl Flooring
- Shaw® 25 oz. Stain Resistant Carpet
- Kwikset® Door Hardware (Featuring Thumbblatch Front Door)
- Craftsman Style Front Door & 9 Lite Rear Door
- Architectural Shingles w/ Limited Lifetime Warranty
- ecobee® Smart Thermostat
- Carrier SmartComfort® Electric Furnace